

Rev. Jane Durham tel: 01458 223417 Mobile: 07421 700 242 email: rev.jane.durham@gmail.com

CHURCHWARDENS

Keinton Mandeville with Kingweston  
Mrs Rachel Willcox 07966 873 660

Lydford on Fosse  
Mr Ralph Berry (01963) 240164

Barton St David  
Mrs Carolyn Giddings (01458) 851617

Lay Ministers: Jane Sedgman (01458) 223237 Jan Jones (01458) 851608  
Benefice Administrator, Jo Oubridge – Email: wheathillbenefice@gmail.com

Web Page : wheathill.org Parish Magazine Editor – Email: wheathillbeneficemagazine@gmail.com



**Grill a Vicar – Coffee & Chat**  
Do you have questions for clergy ?

Do you wonder about things: –  
faith, baptism, marriage, challenges or something else?



Jane will be in Newlands Farm Shop Cafe,  
Keinton Mandeville  
On

Wednesday, 13th May at 2:30pm

Come and join her there for tea/coffee and a chat



**Dates to Note:**

- 16/5 Barton Plant Sale & Lydford Forest Gdn Workday
- 17/5 Lydford Bell Sunday;
- 28/5 T.Ryder Talk;
- 03/6 Home Communion;
- 05/6 Moviola Lydford;
- 06/6 Pims & Ploughmans,
- 21/6 Open Gardens KM

**Contents Guide**

Benefice Services;	Page 2
Rev. Jane's Letter;	
Register	
KM Church Openers;	Page 3
Benefice Churches open;	
Church Car Parks;	
Transport to Church;	
KM Table Top Games;	
KM Open Gardens Date	
Henry Livius Trust	
K.E.G. Update;	Page 4
Km Shanty Night date	
KM Meet Up Group	
KM PC note	Page 5
Barton Scouts	
<b>Barton Plant Sale</b>	Page 6
Barton History Club;	
Pims & Ploughmans details	
Benefice Choir Notes	Page 7
KM Knit & Natter Group	
WPCT Details;	
Walters & Pope Trust;	
Lydford Welcome POPin Cafe	
St Peter's Church Events	Page 8
Lydford PC notes;	Page 9
Lydford NHW;	Page 10
Lydford 3rd Tuesday Group	
LDGC Notes	Page 11
<b>KM Methodist Church;</b>	Page 12
Wild Roots Wellbeing Group;	
<b>Church Organist Wanted Advert</b>	
Lydford P. Hall/Events	Page 13
<b>Butleigh Cricket Festival;</b>	Page 14
Km Village Hall Update;	
Lydford Forest Gdns Workday	



**Glastonbury Food Bank**

Wheathill Benefice has collected donations for the Glastonbury Food Bank during the first three months of 2026.

It might be of interest to you to know that we received 473 Food Donations and once again tinned vegetables being the most popular.

**Financial donations amount to £561.00 Thank you to everyone who donated**

**Save the date – Holiday Club**



**This year's Holiday Club will run from 18<sup>th</sup> – 20<sup>th</sup> August from 10:00am – 12 noon In the Methodist Community hall**

We're learning about some of the people that Jesus met and going to be going outdoors as much as possible.

All Primary School aged children welcome  
(including those about to start)

**Deadline for June 2026 magazine \*\*09:00 am THURSDAY 21st May\*\***

Items to the Editor – VIA EMAIL PLEASE: wheathillbeneficemagazine@gmail.com

## Wheathill Benefice Church Services – May 2026

Date	08:30 am	10:30 am (or as noted)	Other Services
3rd May Easter 5	Holy Communion Keinton	Morning Prayer Lydford on Fosse	<b>Lydford on Fosse APCM</b>
10th May Easter 6	10:30 am Rogation Service, Kingweston		
<b>14th May</b>	<b>7:00pm Ascension Service, Lydford on Fosse</b>		
17th May Easter 7	Holy Communion Barton St David	Morning Prayer Keinton Mandeville	<b>Keinton/Kingweston APCM</b>
24th Apr Pentecost	Holy Communion Lydford on Fosse	Morning Prayer Barton St David	
<b>31st May Trinity</b>		Holy Communion Lydford on Fosse	<b>12:15pm Baptism Keinton Mandeville</b>

### Hello Everyone

*I'm writing this towards the end of April*

The world currently feels like a very strange and slightly unsafe place, with wars, disagreement in parliament about who knew what and when and uncertainty over the impact of everything on food, fuel, plans and more.

I wonder how we respond to this lack of clarity about so many aspects of our lives. In many ways we can decide that we're fine, we live in a beautiful part of the country, unlikely to be hit by war and able to appreciate the countryside around us.

But in other ways we're not, there are concerns about the cost of heating our homes next winter, hot water now. Also the news agencies are making us aware of other uncertainties regarding the implications of the situation in the Middle East.

#### *So how can we respond?*

I've written before about stilling ourselves and knowing that God is still God. But we can also limit the amount of News that we watch/read/listen to so that it does not take over our entire lives.

If we're able to we can get out and about, even just breathing in the fresh air and standing outside for a while, that helps to change our perspective and view on matters.

Sometimes it helps to see a friend, or give someone a phone call, to talk about the more mundane, or can you explore a craft, book, Television or Radio programme?

Amazingly sometimes something as simple as the housework or gardening makes a difference, just doing something that can absorb us and give us something else to think about.

In the midst of all that God is still the one we can depend upon, it may feel as if he has vanished, but as the disciples on the road to Emmaus discovered he is often there, we're just not recognising him. The disciples walked and talked with Jesus, telling him what they thought, and then at the end he broke bread for them and they realised who was there.

So as we walk this rather strange and at times discombobulating world in which we live may we walk and talk with Jesus and discover his presence alongside us.

Best wishes, **Jane**

### From the Registers

*We offer our condolences to the family and friends of:*

**Mr David MARTEN** of Somerton who passed away on the 18th March aged 86 years. His funeral took place at Lydford church on the 18th April 2026.

**Mrs Marelene Ann MORGAN** whose ashes were interred at Lydford church on the 16th April 2026.





**Excellent real ale,  
ciders & good food**

**MEET & EAT**  
A Tasty Gathering  
For Seasoned Adults  
Monday - Friday  
From 12pm - 2.30pm

2 courses from our 'lunch of the day' menu  
It's not too big to manage & perfect for midday!

*Soup of the day*

-----  
Chicken, smoked bacon, vegetable casserole & mash potato  
or  
Sliced ham, Lydford egg and skin on chips  
or  
Beer battered fish, skin on chips with tartar sauce  
-----



1 scoop ice cream or sorbet



**£12 for 2 courses**

*Cream teas available 12pm-5pm*

**CROSS KEYS INN, Lydford - on Fosse TA11 7HA**  
01963 240473 email: [enquiries@crosskeysinn.info](mailto:enquiries@crosskeysinn.info)

**PAUL TUCKER**

**PAINTING & DECORATING SERVICE**

“Local and with over 30 years  
experience in the trade”

For a free no obligation quote  
please call 01458 851134

**Mobile 07850 211532 or  
email: [paultucker1066@gmail.com](mailto:paultucker1066@gmail.com)**

**JONATHAN WILLIAMS**

**Carpet Supplies**

Tel: Othery 01823 698113

*We're not cheap,  
We Just have  
Low Prices*

*Free Home  
Selection  
Service*

*We can supply products from:  
Alternative Flooring to Ulster carpets*

**Cormar**

**Rhinofloor**

**Cavalier**

**Tarkett**

**Penthouse**

**Uniclic**

**HughMcKay**

**Solid Oak**

**Victoria**

**Engineered Board**

**Kersaint**

**Flotex**

**High Quality Flooring : Huge Selection : Carpets  
Laminates & Wood : Vinyls : Safety Flooring**

*Professional Fitting Service* 

*Domestic & Commercial : Genuine Low Prices*

**Cover Your Floor Without  
Leaving Your Door**

## Keinton Mandeville Church Openers – May 2026

Should you need to swap, please could you let Emma know as well as the person due to hand the key onto you. If anyone else would like to help with the locking and unlocking of the church, please call 223344.

Sunday 3 <sup>rd</sup> May – Sunday 10 <sup>th</sup>	Neill Thomas	223613
Sunday 10 <sup>th</sup> May – Sunday 17 <sup>th</sup>	Larry Henessy	07777680088
Sunday 17 <sup>th</sup> May – Sunday 24 <sup>th</sup>	Jo & Chris Tripp	07756314290
Sunday 24 <sup>th</sup> May – Sunday 31 <sup>st</sup>	John Walker	223617

## Benefice Churches – Churches open for private prayer

The churches of Barton St David, Keinton Mandeville, Kingweston and Lydford on Fosse are now all open daily for private prayer with the exception for Lydford during Mid June and mid September due to local conditions.

### Church Car Parks

In Keinton, Kingweston and Lydford it is now possible to give when you visit using the QR codes found on noticeboards or at the door. *If you use the churchyards or car park please do consider making occasional or regular donations towards their maintenance and their ongoing place in the lives of our communities.*

### Transport to Church

An understanding has been reached with **Wheathill Priory Community Transport** for people who need lifts to Church Services. WPCT will try to assist on Sunday mornings, if this applies to you or someone you know **call 07799 487 719**, preferably 48 hours in advance. *Thank you WPCT!*

## Keinton Mandeville Table Top Games Group

If you would like to come along for a drink and a chat or have a coffee/tea while playing table top games like Scrabble, Boggle, Rummikub, Logo, cards, chess etc then why not come along to the group which meets in KM Village Hall. We chat, drink tea and coffee and play table top games. If you would like to come along just for a coffee and a chat without playing any games then you will be made just as welcome. There is no charge as the sessions are funded by KM Parish Council.

The group is open to anyone who would like to come, you don't need to live in Keinton Mandeville. **Future Dates** are *Wednesdays: May 13<sup>th</sup> and June 10<sup>th</sup> both between 10:00am and 12 noon.* There is no need to book just come along if you can. We look forward to seeing you and the kettle will be on!

*Viv Lane & Claire Harding*

**SATURDAY**  
21st JUNE  
1 til 5

Plant Sale  
Cream Teas  
Fresh Air  
and Cake



**The  
KM  
Open  
Gardens**

KIDS FREE

ONLY £5 PP

serving the Parish of Keinton since 1317

**12 GARDENS  
ONE MAP  
ONE  
TICKET**

available  
at any  
garden  
gate



## The Henry Livius Trust

The Livius Trust has two distinct aims: providing items, services and facilities at Keinton Mandeville Primary School; and advancing religion in accordance with the doctrines of the Church of England in the Parish of Keinton Mandeville.

The Trustees are open to any proposals that accord with the Trust's aims.

**Rev. Jane Durham (01458) 223417**

Deborah Whittingham (01458) 224057    Belinda Simson (01458) 223470



# Chapel Heating Ltd

## Stuart Forsey and Son

**Bathrooms, Plumbing and  
Central Heating**

**chapelheating.co.uk**  
**info@chapelheating.co.uk**



**Tel: 01458 850063**

Est. 1986



## Jeff White DipFA MLIBF



**Independent Financial  
Adviser**

Advice on Protection, Investments and  
Pensions

Tel: 07887 575124  
Email: jeff.white@2plan.com  
www.jeffwhite.2plan.com

*2plan wealth management Ltd is authorised  
and regulated by the Financial Conduct  
Authority under ref. 461598.*



## Legal Expertise

IN THE HEART OF SOMERSET

- Conveyancing
- Wills & Probate
- Powers of Attorney
- Elderly Client Matters
- Executor, Trustee & Deputy Services
- Court of Protection

Taunton: 01823 273010  
Street: 01458 441507  
**acornsolicitors.com**



 **Aardvark Motors**  
The Garage @ Catsgore

Your local, friendly family run garage and MOT centre!

- Enjoy a cuppa whilst you wait or drop off -  
- Short notice MOT's often available -

**Customer Reviews!**

"A very friendly, warm service from very experienced staff, would wholeheartedly recommend"

"First class service, so friendly, so helpful - nothing is too much trouble - well done Aardvark, you should be proud, you are all amazing"

See our other great reviews on Google and [www.goodgaragescheme.com](http://www.goodgaragescheme.com)

Honest, genuine & unbiased MOT Testing for Somerton and surrounding villages since 2014  
Call: 01458 241798  
Email: [office@aardvarkmotors.co.uk](mailto:office@aardvarkmotors.co.uk)

Aardvark Motors Ltd. Catsgore, Somerton TA11 7HY  
(between Podimore Roundabout & Lime Kiln Pub)

 Class 4 MOT Centre

 GOOD GARAGE SCHEME REGISTERED MEMBER

 Charlton Mackrell Church of England Primary School & Preschool

**ARRANGE A VISIT**

Inspiring, 1st class education for children aged 2 to 11. Specialist teachers, forest school, musical and sporting opportunities in an idyllic small school setting.  
Ofsted rated : Good

[school.office@cmps.uk](mailto:school.office@cmps.uk)  
[www.charltonmackrellschool.org.uk](http://www.charltonmackrellschool.org.uk)

**Wheathill Golf Club**  
Lydford on Fosse,  
TA11 7HG



**Clubhouse open to the Public**  
**Academy Course - Par 3,**  
Relaxed dress code, Clubs provided  
**Professional Shop & Lessons available**  
**Driving Range - £4 per basket of balls,**  
Clubs provided  
**The place to start your passion for Golf !!**  
**Tel: 01963 240667**  
Visit us at [www.wheathillgolf.co.uk](http://www.wheathillgolf.co.uk)  
T & C's Apply

## Keinton Environment Group (KEG)

The window for Spring wildflower planting is nearly at an end. Just contact us if you have an area of your garden, or a verge, you'd like to plant with pollinator - friendly wildflowers which will not only be good for wildlife but will also make the village a more colourful and attractive place to live.

### Adding Natural Colour to Keinton

KEG's theme and target for this year is "Adding Natural Colour to Keinton" and we would welcome ideas, possible sites and volunteers to help us achieve this. We would particularly like to work in co-operation with other groups in the village, including the School, gardeners and anyone else interested in making Keinton a more colourful, healthy and pleasant environment in which to work and live.

### Community Planning Alliance

We hope you are aware of a new organisation - *The Community Planning Alliance* which is co-ordinating a national scheme to identify green spaces which communities feel should be protected. You can either contact KEG to nominate green spaces in and around Keinton or you can nominate such areas yourself by logging on to <https://communityplanningalliance.org/>

We are continuing our programme of presentations which we use for fundraising to support our various projects around the village. Our next talk will be given by **Hayley Warrens, Vice Chair of Somerset Climate Action**. The date (*to be confirmed*) will be sometime late in May or early June will let you via social media and village notice boards when it has been confirmed. Needless to say other events are in the pipeline for later in the year.

**Meetings** - Our meetings are open to anyone to attend and we'd love to get more people involved in what we do. KEG's meetings are usually on the second Wednesday of each month and have been moved back to the Quarry Inn now it has re-opened. *Our next meeting in the Quarry will be on 13<sup>th</sup> May, starting at 6.00pm*

Email: [info@keintonenvironmentgroup.org.uk](mailto:info@keintonenvironmentgroup.org.uk)  
Facebook: (5) Keinton Environment Group (KEG) Facebook

**Save the Date!**

**Saturday 24<sup>th</sup> October**  
**7:30 pm in Keinton Mandeville Village Hall**  
Back by popular demand  
**Shanty Night**  
With Cornish Shanty Group

**Foresail assisted by The Four Foot Four**

**Tickets (£12) to include supper**

 **Keinton Mandeville Meet Up**   
(includes surrounding villages)

We guarantee a warm welcome for **Carers, the Cared for** and anyone who would benefit from getting together for fun, company, information on hot topics - Fraud, Fire Prevention etc. and availability of local support.

We welcome attendees suggesting ideas for future speakers/topics. Everything is free including refreshments.

**Where:** Keinton Mandeville Village Hall TA11 6ES.  
**When:** First Wednesday of the Month **Time** - 11:0am to 12:30pm.  
For further information contact: [jane.carers@outlook.com](mailto:jane.carers@outlook.com).

## Keinton Mandeville Parish Council

[clerk@keintonmandevilleparishcouncil.gov.uk](mailto:clerk@keintonmandevilleparishcouncil.gov.uk)

**Next Meeting** – The next parish council meetings are on Tuesday, 5<sup>th</sup> May and Tuesday 2<sup>nd</sup> June in the Village Hall at 7:30pm. Public session will take place at the beginning of the meeting. All are welcome to attend. Parish Council new email address and website Parish council new website, which is easier to navigate: <https://keintonmandevilleparishcouncil.gov.uk> Clerk also has a new email address: [clerk@keintonmandevilleparishcouncil.gov.uk](mailto:clerk@keintonmandevilleparishcouncil.gov.uk)

**Dog walking in the village** – Just a quick request for people to please take away any dog waste as you go along your walk. Kaye Elston,  
Clerk to Keinton Mandeville Parish Council



### A Statement from Barton St David Scout Group Scouting messages lost at sea

*"A place to belong"*

**Beavers & Cubs: Ages 6–10** Starting the month, the Cubs and Beavers tore around a skate centre with exhilaration and death-defying stunts. Then, expertly mapped a route from Butleigh to Street and triumphantly hiked it a week later in the Spring sunshine.

Tent pitching races in the hall ranged from impressively swift to *"That's not a tent, that's a pile of canvas with legs sticking out!"* Sparkly Easter crafts may have led to some glittery bunnies escaping into the wild so please look after them if you see them.

**Scout Successes: Ages 10–14** At Goat Cave, squeals, mud and questionable bat impressions abounded. All emerged beaming but smelling faintly of cave. They've made survival tins and lit fires without matches. Finally, working without adults at the Fox Trophy camp – they camped, cooked, endured a tough hike while eagle-eyed judges lurked in the background scoring every element.

They proved excellent at navigating, less so at mud and blister avoidance. We couldn't be prouder, even if some socks and boots may never recover.

**Explorer Escapades: Ages 14-18** Years of Barton Scouts (*think muddy caves, glittery crafts and wobbly skating*) have perfectly prepared Explorers for action-packed adventures in the UK and Europe. February, skiing in France. March, completing a challenging hike with ease for the Duke of Edinburgh Bronze. April, training on Dartmoor for the Ten Tors challenge, where the hills never seem to end and the weather always seems to surprise...

**London Monopoly Run** Recently, London teemed with 450 Scout teams on the legendary Monopoly Run, each racking up to 30,000 steps as they dashed between stations, parks and quirky corners. Barton St David clinched the 'Best Photo' prize for their hilarious Scooby Doo costumes, puzzling Londoners who thought they'd wandered inadvertently into a cartoon. If you missed it, you missed a truly epic adventure—fun, bizarre and brilliant!

**A message in a bottle.** Ever wondered what a bottle thinks? *"I never asked for Scout adventures. I was looking forward to being recycled but all I got was glitter and a philosophical note in my insides. Thrown forcefully into the frothing English Channel by the Royal Navy, washed up on the Isle of Wight and found by an excited child. Next time, please try a pigeon!"* Our bottles clearly make waves and friends just as well as our Scouts. We await the return of one rumoured to have been dropped in the sea around New Zealand.

**Leaders: Safety First, Paperwork Always** Behind every muddy trek, noisy camp or hall session are leaders with mandatory safety, safeguarding, first aid training along with DBS checks, risk assessments and enough paperwork to wallpaper the village hall. When camping all our preparations are double checked by the Scout District. All this is done with a smile (*or probably gritted teeth*) but parents know we put safety first.

**A career shift for some?** Three fearless have leaders braved the digital wilds to create a website full of Barton St David spirit, despite plenty of muttering and frantic keyboard tapping. Take a look here <https://bartonstdavidscout.group> and join the adventure if you dare fill out the form! Or email [gslbarton@yahoo.com](mailto:gslbarton@yahoo.com) if you'd like to know more or join the Group an adult. **Vega Sturgess,**

**Group Lead Volunteer, Barton St David Scout Group. [gslbarton@yahoo.com](mailto:gslbarton@yahoo.com)**

## Guinot Facials and Beauty Treatments

Qualified Beauty Therapist  
With 30 years experience



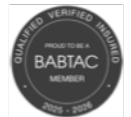
Beauty room at home,  
Keinton Mandeville

- \* Anti aging treatments
- \* Problematic skin
- \* Radiance and maintenance facials

During the facial enjoy a neck and Shoulder massage.

For further details contact fiona on:

07792 759 781  
[me@pewee.me](mailto:me@pewee.me)



## Local & Experienced



- Garden maintenance
- Grass cutting and care
- Gardens planned and created
- Hedge trimming
- Shrubs, trees and compost supplied

Call: Paul 07577 405123 or  
Abbie 07808 721145  
[hortusgardenworks@hotmail.com](mailto:hortusgardenworks@hotmail.com)

## Computer Help

Expert Advice in Plain English

Home and Business calls welcome  
PC or Mac, Tablets and Smartphones

Anything computer related, we can help



For prompt, reliable and friendly service please call:

**Peter Holmes on 07876 652200**

or email: [support@wedmoreit.com](mailto:support@wedmoreit.com)  
or visit our website: [wedmoreit.co.uk](http://wedmoreit.co.uk)

# The Cake Stop

Church Lane, East Lydford  
w3w: lurching.acoustics.verb

A charming honesty-style pantry  
full of homemade cakes and  
bakes for you to enjoy.

Just look for the pretty grey shed!

Pay with cash or scan the QR code  
for other payment options.



Find us on Facebook for  
menus, updates and orders



# THE BARTON PLANT SALE

Barton St David Village Hall

Locally Grown Plants  
Book Stall  
Garden Bric a Brac  
Cake Stall

**SATURDAY 16th MAY**  
10am til 12pm

tea, coffee  
and cake  
available

ALL  
WELCOME



serving the Parish of Barton since 1279



## Barton St David History Club

So far this year we have enjoyed excellent talks on a very wide range of topics:

*"The Mapping of Somerset"* (Joe and Chris King);

*"The History of West Country Spas"* (Sam Hunt);

The background to the religious and political history of 1st century Palestine  
*"Psalms, Palms, Passion and Politics"* (Canon Rev Brian Pearson);

In April we will have heard *"The Hidden Story of the Repulse of the Spanish Armada"* (Dr Justin Newland).

## Future meetings in Barton St David Village Hall

Thursday, 14<sup>th</sup> May at 7:30pm -

Janet Seaton and Barry Winetrobe *"Town Criers: a History"*;

Thursday, 11<sup>th</sup> June at 7:30pm - Helen Baggott;

*"The Mayflower Connection"*

All welcome. Members free, Non-members £4 (cash please) at the door.

## TONY EDWARDS

Painter and Decorator  
Interior & Exterior,  
Coving & Paper Hanging

Tel: 01458 223165

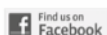
Mobile: 07768 241216

## Bubbles & Suds

- Window Cleaning
- Conservatory Cleaning
- Fascia & Soffit Cleaning
- Gutter Clearance
- Solar Panel Cleaning



01458 258188



Find us on  
Facebook

info@bubbles-and-suds.co.uk  
www.bubbles-and-suds.co.uk

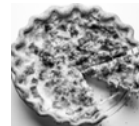
## PIMMS



## & PLOUGHMAN'S

Families and children very welcome

Quiches



&



Fruit Juices

In aid of BSD Church

SATURDAY 6th JUNE, 12 - 2PM

FOLLY  
COTTAGE

Church Street, Barton St David

By kind invitation of Val Southwell-Sander

RSVP: Val 01458 850275



## Happiness Is



singing in a choir

## Wheathill Benefice Choir

Members of the Benefice Choir will be singing at the Rogation Service on Sunday, 10<sup>th</sup> May at Kingweston and also for the Pentecost Service on Sunday, 24<sup>th</sup> May in Barton St David.

The Benefice Choir is still looking for that special person who is an occasional organist/s and could also lead the choir, so if you think you can help, please don't hesitate to get in touch with:

**Rachel Willcox** ([r.kaywillcox@gmail.com](mailto:r.kaywillcox@gmail.com));

**Claire Harding** ([betweenlanes@live.co.uk](mailto:betweenlanes@live.co.uk)) or;

**Rev Jane Durham** ([rev.jane.durham@gmail.com](mailto:rev.jane.durham@gmail.com))

We would be very glad to hear from you

## Knit & Natter, Keinton Mandeville

At Knit and Natter, we are always happy to receive donations of wool which are used for community projects.

*New members are always welcome to come along and join us.* We meet Monday afternoons 2:00 – 4:00 p.m in the Methodist Church rooms.

*For further details please contact Emma Stevens 01458 223344.*

## Wheathill Priory Community Transport – WPCT

We are a volunteer driving service for the residents of Keinton Mandeville, Kingweston, Lydford and Barton St. David. If you are a resident of our villages, do not drive or have your own transport, or you find public transport (*if it is available*) difficult to access, you may be eligible to use our Community Transport Scheme for journeys up to 25 miles each way to:

- the doctor, dentist, hospital (*if free transport is not available*), post office, shops,
- friends or relatives (*including when in hospital*)
- local bus stops, bus stations or railway stations for onward journeys.

If you wish to use our Community Transport scheme please call us 48 hours in advance and we will do what we can to help: Contact is: **07799 487719**

*We are always interested in drivers who can spare a few hours a month to join our team, if you would like to help please call our coordinator on the above number.*

*Drivers are paid Government approved mileage rate of 50p per mile for each drive undertaken.*

## The Walters and Pope Trust Fund (Lydford-on-Fosse)

- ❖ **HELP!** Do you know anyone in Lydford who needs help and/or support?
- ❖ It may be help with buying books for university.
- ❖ It may be help with buying tools or equipment for a new job.
- ❖ It may be support for someone who is ill, or who is caring for someone.

The Walters and Pope Trust Fund has a small annual income – the Trustees would like to spend this money, fairly and discreetly, for the benefit of anyone who lives in Lydford. If there is anyone who would like assistance, please contact the Trust in confidence: *Secretary, Caroline Seehra tel: 07926 488190*

## Welcome and POPin Cafe

**Tuesday 28<sup>th</sup> April in Lydford Parish Hall**  
**From 10:30am to 12 midday**

This month we are continuing our coffee mornings with coffee/tea (decaff available) and homemade biscuits or cakes (gluten-free also available).

Everyone is welcome, so please come along to enjoy our delicious offerings, have a chat and perhaps take away a book or two from the selection offered. There are no charges but donations are always appreciated.

*On behalf of Walters & Pope Charity*



**FREE Oven Liner** with your first clean

Stewart Baldwin  
Your Local OvenGleaner

**Would you like your Oven, Range or AGA Gleamed?**

"Stewart was on time & was very professional in my house, he was kind & very friendly. My oven is like brand new & I am very pleased with everything. I would have no hesitation in recommending OvenGleaners." Rosalind R.

✓ Full Strip Down Clean	✓ All Makes & Models
✓ Inclusive Pricing	✓ Safe For Children/Pets
✓ Fully Qualified & Insured	✓ Safe For Asthmatics
✓ Easy Call, Quote & Book	✓ COVID SAFE CLEANING

✓ All Work Backed By Our Satisfaction Guarantee

**Call Now: 01935 351007**

[www.ovengleaners.com](http://www.ovengleaners.com)  
Ovens | Ranges | AGAs | Hobs | Extractors | BBQs

## WESTFIELD DAIRIES

Westfield Farm, Coombe Hill,  
Keinton Mandeville

A Traditional Doorstep Milk Delivery Service, covering Keinton Mandeville, Lydford, Barton St. David, the Charltons and beyond.

We also deliver organic milk, cream, a range of fruit juices, butter, eggs and cheese.

**To start your deliveries,  
please phone 01458 224660**

Andrew Knight D.O. FSCCO  
OSTEOPATHY

Practice in  
**Keinton Mandeville**  
07889 857289  
Bookings online at  
[www.andrew-knight.co.uk/booking](http://www.andrew-knight.co.uk/booking)



## Lydford on Fosse Parish Council

Next month's meeting will be held on **Wednesday, 13<sup>th</sup> May** in the Parish Hall, starting at 7:00pm. ([clerk@lydfordonfosseparish.gov.uk](mailto:clerk@lydfordonfosseparish.gov.uk))

**The PC meeting on 8<sup>th</sup> April** was earlier and shorter than usual as it was followed by the Annual Parish Meeting. Among the items covered were:

1. *Planning appeal (2025/1996/CLP)* for development on the Cary Road refused by Somerset Council. PC unanimously agreed that Somerset Council's rejection of submission had failed to recognise the adverse local implications of their decision, deciding to write to the Planning Inspectorate recommending the applicant's appeal be upheld.
2. *Somerset Rivers Authority's (SRA)* rejection of PC bid for £5,000 to construct a flood defence bund at Bridgefoot. SRA supported the proposal in principal, but rejected it due to lack of detailed technical modelling of benefit of proposed bund. PC members felt this reflected SRA's lack of understanding of local surface water dynamics – *with which we are now all too familiar* - that the required level of modelling would have made the project unaffordable.

**Annual Parish Meeting** – Each April, the Parish Hall hosts a meeting for all Parishioners. Importantly, it is not a PC meeting: all have an equal right to speak and vote. The aim is to let people know what has been going on in our community, what groups, clubs and institutions plan to do in the coming year, and for anyone to highlight issues of concern.

- **The meeting began by remembering David Marten**, long-time resident of Bridgefoot and former Parish Councillor. Our deepest condolences to his family.
- **Main concerns raised this year focused on Road Safety** - including noise nuisance created by speeding vehicles on the B3153 from Castle Cary (*particularly lorries speeding up to make a green light at the crossroads*), and unrestricted speed limit at the New Inn (Fairplace) junction with A37. *All for consideration under Parish Council's Highways programme for coming year.*
- **Pavement Parking** - Clearly one of the biggest concerns Parishioners share is frequent blocking of the pavement along the A37, forcing pedestrians, *including those with walking frames, pushchairs and dogs on leads*, into a road with a speeding problem, unnecessarily putting lives at risk. A growing problem for over 20-years, we are determined to find a way to resolve it for once-and-for-all. Best short-term answer is persuading the Police to take action, there are longer term options that we can pursue through sponsoring new traffic orders. These will only succeed with a significant body of evidence demonstrating the extent of the current problem. *We ask all to meticulously record ALL pavement parking on the A37.* Advice on how/where to report Pavement Parking, added to the Parish website.
- **Neighbourhood Plan**, imminent national planning legislation/regulations changes will see local communities lose influence on decisions of major housing developments in their area as Government seeks to accelerate approvals in order to address national housing shortages. Although the PC is sympathetic to the needs of those struggling to find affordable housing, we have seen many local examples of rushed approvals/poorly implemented developments undermining the character and cohesion of rural communities. As a Parish, we can retain some influence over developments in Lydford on Fosse if we develop a '*Neighbourhood Plan*', this would take a lot of work, needing the support of the whole Parish. A meeting to explain creation of a *Neighbourhood Plan*, what it would involve, how it could help us protect the unique character of our community, will be arranged soon.

Details of reports submitted at the meeting will be available once draft minutes prepared; highlights included: **A.** Great work our community **SpeedWatch** team continue to do. **B.** Success of the **Sports Club**, in particular the cricket and skittles teams. **C.** **Parish Hall Committee's** progress upgrading the Hall's audio system, including restoring the hearing loop. **D.** **Parochial Church Council's** (PCC) extension of church car park and fund-raising to refurbish the bells in St. Peter's. **E.** Continuing popularity of the **Lydford & District Gardening Club**, and the fantastic job they do on planting around the war memorial.

**F.** December's return of local am-dram group, **the Fosseyway Players**, "*Who killed the Headmaster ?*" after a long hiatus.



**GPS**  
Plumbing Services Ltd  
07484 772912

Qualified Local Plumber  
Over 30 years experience in  
Plumbing & Heating Installations  
All work guaranteed  
Emergency call out

**Call Gerry on:**  
**07484 772912**

[gpsplumbingservices@outlook.com](mailto:gpsplumbingservices@outlook.com)

**Ian Chapman**  
**Chimney Sweep**



HETAS Registered

- Wood/fuel stoves & open fires
- Sweeping & Servicing
- Nest Removal
- Clean & Professional Service

Text or call Ian on  
**07976 880267**

**Keep Warm – stay Safe!**



**JUST CATS**  
— HOME CARE —

For cats that like their own home  
**Personalised Cat Care**  
In Your Own Home

Weekend, Holiday & Daily Packages Available

- ◆ Calm, unhurried visits tailored to our cat's individual needs, routines, and personality
- ◆ Experienced care for all cats, including shy, senior and medicated cats.
- ◆ A focus on comfort, familiarity, and genuine companionship in their own home
- ◆ Regular updates for complete peace of mind while you're away.

☎ 07545 034009  
✉ [harrietsinfieldday@me.com](mailto:harrietsinfieldday@me.com)  
f @JustCatsHomeCare

Follow us on Instagram @ JustCatsHomeCare

**Forsey and Son**  
 Established 1946  
 INDEPENDENT  
 FAMILY FUNERAL DIRECTORS  
 MEMORIAL MASONS • PREPAYMENT PLANS  
**Willowfields, Lowerside Lane  
 Glastonbury, Somerset, BA6 9GY  
 01458 831020**  
 Also 28 High Street, Butleigh, Glastonbury,  
 Somerset, BA6 8SY 01458 850654  
 or Street 01458 443677  
 Pound Pool, Somerton,  
 Somerset, TA11 6LZ 01458 272297  
 or Langport  
 01458 250509



[www.forseyandson.co.uk](http://www.forseyandson.co.uk)



**Lydford Neighbourhood Watch**  
[lydfordnhw@gmail.com](mailto:lydfordnhw@gmail.com) Emergency Call 999  
**Non Emergency 101 or Report Online [www.avonandsomerset.police.uk](http://www.avonandsomerset.police.uk)**  
**To Remain Anonymous Call 0800 555111**  
**Street Contacts**  
**A37 – Jeremy Spencer 07517 771852**  
**Lydford on Fosse - Cary Road – Lali Seehra 07530 121515**  
**East Lydford - Church Lane (A37 side) – Ian Poynter 01963 240424**  
**Church Lane (Castle Cary side) Lynne Mitchell 07773 345092**  
**West Lydford**  
**South of the Brue – Ann Parkhouse 07977 260110/Mike Pauley 01963 240469**  
**North of the Brue – Linda Foote 01963 240336**  
**B3153 from Lydford traffic lights to boundary with Keinton Mandeville including  
 King o' Mill – Maggi Hollands 07816 445597**  
**Village Contact – Lynne Mitchell 07773 345092 [lydfordnhw@gmail.com](mailto:lydfordnhw@gmail.com)**

**Somerton  
 Hair & Beauty**



Hair Styling and Colour treatments  
 Eye Lash/Eyebrow Tint and Shape  
 Facials, Massage, Manicures,  
 Pedicures and Waxing, Sunbed  
**Mobile Hair and Nails service**  
**Chapel House, West Street  
 Somerton TA11 7PR**  
 E: [ruth.merrigan@btinternet.com](mailto:ruth.merrigan@btinternet.com)  
 T: 01458 272910 07885 973157

Find us on Facebook **Somerton Hair and Beauty**

**Home Security Talk**  
**Saturday 9<sup>th</sup> May 2026 10:00 am**  
**Lydford on Fosse Parish Hall**

In cooperation with the Parish Council village residents are invited to a talk and Q & A by PCSO Natalie McIntosh. The main focus of the meeting will be to give guidance and support on how to protect your home and belongings to avoid becoming a victim of burglary.

Please do come along to discover simple ways to keep your property safe.

**WILLCOX CARPENTRY & JOINERY**

**Steven Willcox**  
 Manufacture & Installer of  
 Purpose Made Joinery Inc:

- Doors
- Windows
- Stairs etc.

**Tel: 07774 711 509**

**Did You Know?**

There is an APP called **NHSquicker** which gives you live opening and waiting times for local hospital MIU and A&E based on your post code and covers Somerset, Devon and Cornwall. It also includes pharmacies, dentists and opticians. VERY USEFUL!

**huttonbrown**  
 painting & decorating  
 established family company

**Our Services**  
 Period and heritage  
 Dustless sanding  
 Spray / brush finish  
 Wallpaper hanging  
 UPVC windows

**Why Choose Use**  
 50 years of experience  
 Unrivalled quality  
 Highest level of finishing  
 A\* communication

Call John: 07711657170 or text images for instant quote and availability.  
[www.huttonbrowndecorating.com](http://www.huttonbrowndecorating.com)

**Lydford Third Tuesday Group**

In March, – we had a very enjoyable tour of *the Shoemakers Museum in Street* which has several galleries telling the story of the Clark family and their shoemaking business. Our guide told us how Clarks shoes was founded in 1825 with the production of the “*Brown Petersburg*” slipper and how the company has developed and marketed their shoes over the years. It was particularly interesting to see the display of advertising posters and re-creations of shop window displays. And of course, the range of products they have produced over the past 200 years – from the first elastic topped boots, to the shoes with wooden, hinged soles developed during the war in response to leather rationing and the shoes with toys in the heels from the 1980s.

**April**

We had an *arts and crafts social evening* when Lesley and Daphne gave us a short talk about creating cyanotypes on paper and on fabric and Ann told us about the art of bookbinding. This was followed by an open session with members sharing details of their creative hobbies and showing us their work. We were treated to a range of beautiful creations including pencil sketches, charcoal drawings, handmade clothes and pottery. What a creative bunch we are!

**Next Event – A talk by Ruth Ames-White on “The Wells in Mosaic Project”.**

**Tuesday, 19<sup>th</sup> May at 7:30pm In Lydford Parish Hall**

Ruth will tell us about the community art project that has created a wonderful 6 metre diameter mosaic depicting the city of Wells to be installed in the centre of the city. This will be an open meeting – all are welcome to attend

Women Visitors from Lydford and surrounding villages are welcome to ALL our events usually held at 7:30pm on the third Tuesday of the month in the Parish Hall, West Lydford (unless otherwise stated). For details of this year’s programme or more information contact us at [lydfordthirdtuesday@gmail.com](mailto:lydfordthirdtuesday@gmail.com) or take a look at our website at <https://thirdtuesday.wixsite.com/thirdtuesday>



## Lydford and District Gardening Club

Unlike the fictional county of Midsomer, rural Mid-Somerset is generally quite peaceful. Occasionally dogs will lose their owners and items of post will be delivered in a most random and incorrect fashion but by and large there is not really enough happening to keep a television series running for a few weeks never mind nearly 30 years. However, recently there has been consternation in the community, brouhaha in the borough and perturbation in the parish.

This disquiet has been caused by a lack of information and insufficient recognition for the performance of a Gardening Club speaker. Not just any old horticulturalist trying to earn a few bob in an evening in order to buy a few packets of Woodbine, (*The last sentence may need interpreting for any younger readers*), but one of our own who gave his services for free and offered seeds and plants at a very reasonable price in order to bolster Club funds.

The issue stems from the fact that in order to allow editors, compositors, writers and similar people a well-deserved month of rest, the Parish Magazine has a fallow period in March. The February edition of the periodical covers the following month as well and therefore the April edition reports on March events, but February, the month of lovers and incessant rain can be ignored. If the above made no sense at all do not worry. The fault is in the writing not the reading. So in an effort to remedy an inexcusable omission we will go back in time to the dark days of February, Tuesday 10th to be precise. The speaker was **Neal Hatch, resident of Lydford Fairplace and dahlia grower extraordinaire!**

Neal obviously knew enough about his subject to have kept going into the wee small hours but showed mercy on his audience by limiting his talk to a scratching of the surface of dahlia-lore. Excellent photographs of examples of the many different types provided inspiration for the rapt listeners and tips were given about cultivation, keeping plants over winter and creating new varieties. Slugs received a mention yet the magic solution to these vermin appeared to be nothing more than regular evening rambles with a torch and a big bucket. To appease the more squeamish amongst the group, information about the final destination of the captured molluscs was veiled in a tight shroud of secrecy. Neal was knowledgeable, entertaining and very good value for a dark February evening.

### April Meeting

April's adventure was the annual trip to Brimsmore. Club members managed to avoid most of the vast chasms otherwise known as potholes which appeared to have been cunningly positioned as a means of defence by the inhabitants of Yeovil and settled down in the garden centre restaurant with a cup of coffee and the commercial product which is laughingly called a biscuit.

Adam then spoke. Mostly in an effort to tempt members into purchasing plants which were rather expensive, even with a 25% discount. However, he did forget his profit laden motive for a moment and raised the interesting topic as to whether traditional brands of fertiliser were suitable for modern peat-free composts or was their formulation in need of a tweak? People then went on a polite rampage around the emporium, filling baskets with seeds, plants, fertiliser and assorted sundries. The evening was a great success and the turnout represented a good fraction of the total Club membership.

Potato growing was obviously a major topic of conversation. Some cultivation hints and tips were shared but with the competition in progress, were any of these snippets disinformation? Perhaps the liquor created by boiling old socks, snail eggs and wood dock leaves picked under a full moon might not actually be the perfect fertiliser!

### May Meeting – Tuesday, May 12<sup>th</sup>

**Colin Higgins** will be coming to the Parish Hall to talk about garden ponds and other features for wildlife. Colin has spoken to the Club before and proved to be very knowledgeable. Obviously all members are invited to attend but if anybody wants to taste the gathering without committing to membership they are more than welcome to come and join the assembly and find out what is going on. The strange sound which might pervade the hall as members arrive will probably be the collective sigh of relief resulting from the return to home ground but more particularly the resumption of access to truly proper biscuits!

**CandlelightCare**  
Your Home, Your Care

Compassionate day and live-in care you can trust, all from the comfort of your own home

**A Friendly, Family-Run Care Team. Here to Support You at Home.**

www.candlelightcare.co.uk  
Candlelight House | Glastonbury

Good Care Quality Commission

**ROB JARVIS**  
**KITCHEN FITTING & CARPENTRY**

Full Kitchen Fitting Service Offering Advice, Planning and Complete Installation  
Bespoke Fitted Bedroom, Bathroom and Office Furniture - Wardrobes, Storage Cupboards, Bookcases Etc  
Designed and Built

**M: 07785 582 415 T: 01458 850041**

**JAMES**  
PLUMBING & HEATING

MULTIFUEL SYSTEMS SUPPLIED & FITTED ACCREDITED OFTEC

**07776 213198**

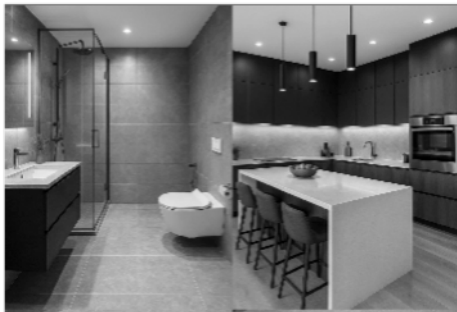
**OIL, BOILER & AGA SERVICING  
PLUMBING INSTALLATIONS**

**Chris Rood**  
**Gas and Renewable Services**

- ❖ Wood Fired Stoves and Heating Systems
- ❖ Boiler servicing, breakdowns, upgrades
- ❖ Gas appliance installations including LPG
- ❖ Landlord safety checks.
- ❖ Heating systems power flushed.
- ❖ Underfloor heating.
- ❖ Solar water heating systems.
- ❖ Ground & air source heat pumps

For a reliable and friendly service call Chris Rood  
**07841 871834 or 01963 240191**  
chrisroodgrs@gmail.com  
(non-urgent enquiries)

**GAS SAFE Registered - No. 234009**



**WAKES**  
PLUMBING SERVICES

Over 25 Years Experience



Bathroom and Kitchen Installations  
Plumbing Emergencies and repairs  
Central Heating Installations  
Plastering, Carpentry, Painting  
Floor and wall tiling

07849248516

Nic Wake

wakesplumbing@gmail.com

## JOHN STONE

**ELECTRICAL SERVICES**  
**INSTALLATION,**  
**TESTING AND REPAIRS**

NIC EIC/PART P registered contractor  
Barton St. David, Somerton

**Tel – 07966 222840**

**sparkyjstone@gmail.com**

## LOGS FOR SALE

- ❖ Quality, seasoned hardwood Ash
- ❖ Now available Kiln Dried Harwood
- ❖ Any size loads
- ❖ Free delivery to local area
- ❖ Nets of logs available for collection

Phone Richard

01458 224660/07770 608079

Westfield Farm, Coombe Hill,  
Keinton Mandeville

**SPARKFORD**  
TIMBER BUILDINGS & GATES

Crafting quality  
timber buildings and  
gates since 1912

Sparkford, Yeovil, Somerset BA22 7LH

Tel: (01963) 440414

Email: info@sparkford.com

@sparkfordtimber

www.sparkford.com

## Methodist Chapel, Keinton Mandeville

Minister: Rev. Collin Moore

Email: collin.moore@methodist.org.uk Tel: 07895 892 740

May 2026 Services - At 10:30 am (unless noted otherwise)

Please Check Notice Board for other Service Details

Sunday, 3<sup>rd</sup> May

Morning Worship

Rob Haskins

Sunday, 17<sup>th</sup> May

Holy Communion 3:00pm

Rev Collin Moore

### Talks and Supper

On Thursday, 16th April, *Brigadier David Morgan O.B.E* spoke about his time with the Duke of Edinburgh's own Gurkha Rifles Regiment during the Falkland War in 1982.

It was a personal and vivid description, both about the wonderful character of the Gurkhas and the extremely difficult terrain in which they found themselves.

Brigadier Morgan was obviously very proud of his 'boys' and all that they achieved in the Falklands. Many thanks for such an enlightening talk. A collection at the end of the evening raised £140 for the Gurkha Welfare Trust - Thank you for your generosity!

### Next Talk

Our next talk will be -

on Thursday, 28<sup>th</sup> May,

**Trevor Ryder** will be speaking about '*Super Volcanoes*'.

### Regular Groups

Our regular groups continue at the hall -

**Knit and Natter** meet on Mondays, 2:00 - 4:00pm. New members are always made very welcome!

**Toddlers and carer** get together on Tuesdays, 10:00am - 12 noon. Please join them for a fun time and a chat...

### Wild Roots Growing for Wellbeing Group

*Mondays 10:30 am - 2:30pm at Catsham Nr Baltonsborough.*

Wild Roots Growing for Wellbeing Project welcomes people who are keen to get outdoors, learn new skills, share their skills or just have the opportunity to spend some time in a peaceful environment. Our main emphasis is on horticulture and rural craft activities which take place in our large vegetable, fruit and flower growing area.

Maybe you need an excuse to get out of the house or just want to dip your toe into being around other people again. Whatever it is you're looking for we can always find gardening related activities to suit your mood and energy levels on the day. With two covered open sided sheltered areas and a large poly-tunnel we can cater for whatever the British weather throws at us!

If you want to find out more please contact Ursula Casey at: [ursula@wilderwoods.org](mailto:ursula@wilderwoods.org).

**Central Somerset Outdoor Learning Partnership** - Registered Charity Number 1151284 <https://www.facebook.com/wilderwoods.org> [www.wilderwoods.org](http://www.wilderwoods.org)

## Wanted – Organist/Pianist

**Wheathill Benefice is made up of 4 churches –**

**Barton St David, Keinton Mandeville**

**Kingweston and Lydford on Fosse**

We hold a Service every Sunday and alternate our services across our Benefice churches.

We are in need of an Organist or Pianist to support our service's so that we can continue to fill the churches with joy and fellowship.

If you think you might be able to help us even if it is infrequently, please contact Jo on email address enclosed:

[wheathillbenefice@gmail.com](mailto:wheathillbenefice@gmail.com)

## Lydford on Fosse Parish Hall

The Parish Hall Management Committee is looking for a new Treasurer to help support the smooth running of the hall. The role takes just a couple of hours a week, is not difficult, and can be done at times to suit you. Our committee meets 4-5 times a year, and full support will be given during the handover. If you're organised and would like to play an enjoyable but important part in village life, we'd be delighted to hear from you.

Meanwhile, there's plenty happening in the hall as we move through the month. Our regular groups continue to bring people together - Scrapbags with their textile crafting projects, Yoga with Jill offering a calm midweek pause, the Royal Enfield Owners Club sharing their passion for all things motorbike, and the Gardening Club comparing notes as the growing season gets underway and we learn about garden ponds. The Parish Council meets as usual on the second Wednesday of the month, and our Welcome & PopIn Coffee Morning remains a cheerful spot for a chat and delicious home bakes.

We're also looking forward to welcoming our new PCSO, Natalie McIntosh, on Saturday, 9<sup>th</sup> May at 10am. It's an informal chance to meet her and to hear about local priorities, the *focus of the meeting given to guidance and support on how to protect your home and belongings to avoid becoming a victim of burglary.*

The 3rd Tuesday Group is opening its doors to everyone this month for a talk on Tuesday, 19<sup>th</sup> May *on the Wells Mosaic Project.* Non-members, men, and children are all warmly invited as it promises to be an interesting and creative evening.

And for those who enjoyed it last time, we're hoping to confirm another of Gemma's relaxing sound baths on Monday, 25<sup>th</sup> May.

Looking ahead, to mark 20 years since the renovation of Lydford on Fosse Parish Hall, we're planning a trio of family friendly community events across June and July. We begin by *Bringing Lydford's History to Life on Saturday, 20<sup>th</sup> June from 10:00am*, offering a relaxed chance to explore the parish's history together.

In July, we'll be at *Lydford Family Fun Weekend on Saturday 11th July at the Sports Ground, followed by our special Celebration Day on Saturday, 25th July from 4:00pm*, when we hope to bring everyone together to round off the anniversary in style. **More details will follow, but please pop the dates in your diary.** We hope there's something that catches your interest, and we look forward to welcoming you to the parish hall.

### User Events for May 2026

Thur 7th	Scrapbags Yoga	2 - 4pm 7:00pm	Sociable Fabric/Wool Crafts Local Yoga group with Jill
Sat 9th	Neighborhood Watch, Home Security	10:00am - Noon	Our New PCSO offers Home Security Tips
Mon 11th	Royal Enfield Owners Club	7:30pm	Members and guests of Club
Tues 12th	Lydford & District Gardening Club	7:00pm	Garden Ponds, Wildlife features with Colin Higgins
Wed 13th	Parish Council Meeting	7:00pm	All welcome, short PC meeting, Planning details
Thu 14th	Yoga	7:00pm	Local Yoga group with Jill
Tues 19st	3rd Tuesday Group	7:30pm	The Wells in Mosaic Project
Thu 21st	Scrapbags Yoga	2 - 4pm 7:00pm	Sociable Fabric/Wool Crafts Local Yoga group with Jill
Sat 23rd	Private Booking	12 - 2pm	
Mon 25th	Tentative date - Sound Bath with Gemma	7:20pm	Relax & unwind at our soothing sound bath
Tues 26th	Welcome & POPin Cafe	10:30am	All welcome for coffee and home bakes

# Pilates

Monday at

Keinton Mandeville Village Hall

09:15am – 10:15am (Intermediate)

10:30am – 11:30am (Beginners)

Private session 1 to 1 also available

Contact **Mo** for details on:

**07815748518**

**mospilates@yahoo.com**

## BROADLEAVES

- Garden Maintenance
- Lawn Mowing;
- Hedge Trimming
- Borders & Shrubs etc.

Regular and one-off visits available

Local, experienced and friendly

Fully Insured & Licensed Waste Carrier

**M: 07980 395 126**

Email: [robcarling@hotmail.co.uk](mailto:robcarling@hotmail.co.uk)

## Brister & Son

Independent Funeral Directors



When your family suffers the loss of a loved one, we are here to support, guide and reassure you – every step of the way.

Call Teresa or Daniel for an appointment on **01963 850165**

Woodside Court, Sparkford  
Somerset BA22 7LH

Email: [info@wsbrister.com](mailto:info@wsbrister.com)

[www.wsbrister.com](http://www.wsbrister.com)



**BUTLEIGH C.C  
CRICKET FESTIVAL** 

**14TH JUNE  
2026**

- **FOOD, DRINK AND CRICKET!**
- **FUN ACTIVITIES FOR ALL THE FAMILY**
- **LIVE MUSIC THROUGHOUT THE DAY**
- **FREE ENTRY FOR THE WHOLE COMMUNITY!**

**12PM  
BA6 8SA**



**Butleigh Cricket Club is set to host its first-ever  
Community Cricket Festival on Sunday, 14th June  
Proceedings getting underway from 12:00pm.**

*Entry to the festival is free, so accessible for everyone to attend and enjoy*  
The event promises to be a lively afternoon for all ages, with attractions including food stalls, live music, and fun activities designed for the whole family. Organisers are hopeful that the festival will bring together residents from across the village and surrounding areas in a celebration of local sport and community spirit.

**Highlight of the day will be a special exhibition T20 match**

This marks the first time a representative team has been selected from clubs across the surrounding area. The match is expected to showcase some of the region's finest cricketing talent in an exciting and competitive format.

Club representatives have expressed enthusiasm for the event, noting that they hope it will become a regular fixture in the local calendar. All members of the community are encouraged to attend and support a memorable and enjoyable day at Butleigh Cricket Club. *Volunteers will direct people to the car park, in field next to cricket ground.*

**Butleigh Cricket Club, The Club House, The Court, Sub road, Butleigh BA6 8SA  
Contact: Mr Jacob Potts 07549 642 005**



**Stop Press! New Kitchen Completed  
at Keinton Village Hall**

Keinton Mandeville Village Hall is your unique focal point for village events, functions, sport on the MUGA, gatherings on the playing fields and for hire: for weddings, parties, exhibitions, meetings and social groups.

The trustees are delighted to announce that the installation of a new kitchen by local contractors has been completed. This has been made possible through the generosity of a local benefactor and, combined with an upgrade to the bar area in the committee room, means the hall is a great venue for all occasions.

*(We know they were tired but the original kitchen units and fittings had lasted for 27 years! We have every confidence that the new ones will do even better.)*

Visit our website <https://keintonmandevillevh.co.uk> to see what's planned, check our bookings calendar for hall vacancies, or get in touch with us via [kmvillagehall@gmail.com](mailto:kmvillagehall@gmail.com) or with any of the hall Trustees for more information.

*We have recently welcomed a new member to the team and, if you too have time to spare and would like to get involved in running this great facility, please do let us know. More help will be very welcome.*

**Lydford Forest Gardens Workday**

**Saturday, 16th May 2026: 9:30am -12:30pm**



Lydford Forest Gardens' trustees and friends will be holding a workday in the Gardens in West Lydford between 09:30am and 12:30pm on Saturday, 16<sup>th</sup> May. At recent workdays, we have expanded the herb garden, improved the seating, topped some of the fruit trees to make their harvests more accessible and undertaken lots of timely maintenance. At our forthcoming workday, we'll be getting the gardens ready for the summer by getting to grips with the weeds and aiming to banish the brambles, plus some late spring tidying. We'll also enhance our 'bog garden' – a small corner of the Forest Garden that is recreating a wet-meadow habitat for moisture-loving plants amphibians and birds. We would welcome any volunteers of any age to help. If you have your own digging and gardening equipment and gloves, please feel free to bring them along. If not, don't worry, there will be spares to borrow. And if you'd just like to know a bit more about our unique Forest Gardens, please visit our website at: [www.lydford-forest-gardens.com](http://www.lydford-forest-gardens.com)

Or come and say hello on 16<sup>th</sup> May. We look forward to seeing you there !

**Landscape My Garden**  
Garden Maintenance and Landscaping



Tel: 01458 272766 or 07999 837549  
Email: [Landscapemygarden@hotmail.co.uk](mailto:Landscapemygarden@hotmail.co.uk)  
Website: [www.landscapemygarden.co.uk](http://www.landscapemygarden.co.uk)

**A R Gane and Sons**  
**Lydford Agri Store**

**Equine,  
Animal,  
& Pet Suppliers**

West Lydford, Somerton  
Somerset TA11 7DL  
Telephone : 01963 240501

**Michael Beasley, who will be  
Bishop of Bath & Wells, May 2026**



Living the story. Telling the story.



**Called to Care**

I heard about one of the earliest scientists to get involved in climate change research. When he began, the researcher said, he'd believed that if we could just get the science right, all the challenges could be resolved.

The best information would enable humankind to find the right technologies and take the right actions to bring climate change under control. Twenty-five years on, the scientist said, he'd realised he'd got it all wrong. What we need to sort out, he said, is the human heart. We know what to do to address the climate emergency. Our challenge is that we're all too liable to place the actions we need to take into the 'too difficult' box, or just deny there's a problem altogether.

Yet whether we like it or not, the climate emergency is a reality that is advancing upon us. It's seen in rising sea levels and increased freak weather. Talk to our brothers and sisters in Zambia and they'll tell you that the climate emergency is upon them now in increased droughts and floods.

Last year the National Emergency Briefing on the Climate and Nature Crisis saw leading experts brief an audience of over 1,200 politicians and leaders from business, culture, faith, sport and the media. The Briefing outlined the implications of climate breakdown for health, food systems, national security and the economy. If you've not seen it please can I encourage you to find out where you can watch it.

I invite you all to think too about the next steps we can take to address an issue we'd probably rather ignore. The Church of England has set the bold target of becoming Carbon Net Zero by 2030. Our churches can make a difference in local communities towards achieving this ambitious goal. I urge you to fill out your church's Carbon Footprint return, sign up to achieve an A Rocha Eco Church Award, make whatever difference you can where you are. Such actions are a sign of us turning around – metanoia as the New Testament puts it – away from denial of what's wrong towards putting things right. Our actions can be signs of the change in heart that all of us need to make.

**Bishop Michael**

**MARK WHITE**  
Furniture & Cabinet Maker

Designer & maker of freestanding & fitted furniture. Kitchens, wardrobes, home offices, bookcases & display cabinets, made and installed.

**07890235660**  
markwhitefurniture@gmail.com  
www.markwhitefurniturecabinetmaker.com

**DM Electric Ltd**  
We are your local electricians  
**Dave McCarthy**  
M: 07545786691 T: 01458 527021

Domestic, Commercial and Industrial  
CCTV & Security Alarm Systems  
Electrical Rewires & Repair  
Lighting, Fire Alarm & EV Chargers  
Solar and Battery Installation  
EICR and Certification

City & Guilds Register  
Electrical Safety  
Qualified

**Lydford Moviola**

The Moviola screening at Lydford Parish Hall is on **Friday 5<sup>th</sup> June at 7:30pm** The tickets are **£8.00 each**  
The doors open at **7.00pm** with a bar available until **7:30pm**

The film to be shown will be **Hamnet (2025) 12A** starring **Jessie Buckley and Paul Mescal**, based on a novel by Maggie O'Farrell, who co-wrote the screenplay. *William Shakespeare (Paul Mescal), a Young Latin tutor, falls in love with the free spirited Agnes (Jessie Buckley) and marries her despite his parents disapproval.*  
*In due course they have three children but William heads to London to pursue his career as a dramatist, leaving his family in Stratford.*  
*During his absence young Hammett (Jacobi Jupe) falls sick with the plague and dies before his father arrives home. Later Agnes journeys to London to watch her husband's latest play Hamlet.*

To reserve tickets or for more information please contact:  
**Linda Foote on (01963) 240336, 07504867587**

**Lydford Scrapbags**

Are you interested in joining a group for ...  
Sewing, quilting, dressmaking or embroidery; also you could do knitting crochet macramé bobbin lace etc.?

We meet in the Parish Hall, West Lydford, on the **1<sup>st</sup> and 3<sup>rd</sup> Thursday of the month between 2:00pm – 4:00pm**  
For which we all pay a small fee.

**My contact details are: Phone: 01963 240435 or 07484 612828**  
**Email: annefleming1@btinternet.com**

*Anne Fleming*

**Osborne**  
TREE SERVICES

Tree Shaping, Pollarding and Felling  
Hedge Trimming, Stump Removal  
Garden Clearance

Fully insured, NPTC qualified  
National Certificate in Arboriculture  
**Telephone – 07896 813 934**  
**Osbornetreeservices@hotmail.co.uk**



Bystanders can be life-savers



The life you save could be a family member



Your hands can bring them back



Be the Difference. Take charge



Because family and friends matter

# Free First Aid Training Saturday 27<sup>th</sup> June 10-1pm and 2-5pm Keinton Mandeville Village Hall

## A Community training event

Keinton Mandeville WI in partnership with  
Keinton Mandeville Parish Council and  
Amanda Rayner (first aid trainer)

### All Welcome!

We have two defibrillators at the Quarry pub and the school.  
But would you be able to use one with confidence?

### You will learn:

- CPR. For adults and children
- Defibrillator. Use with confidence
- Choking. What to do
- Bleeding. How to help.
- Recovery position. Ensure an open airway

## Keinton Mandeville WI

At our April meeting, *author Sally Smith* gave an amazing insight into the intrepid women who have made the first circumnavigations of the world by train, ship, air, car bicycle.

Relatively unknown, they included Jeane Barat, Ida Pfeiffer, Annette Meakin, Harriet White-Fisher and Lady Grace Drummond-Hay- not forgetting Valentina Tereshkova- the first woman in space!

## May Meeting – AGM

On Thursday, 21<sup>st</sup> May we have our AGM, followed by plenty of chat and laughter as we enjoy a shared buffet spread.

## June Meeting

Our Meeting, Thursday, 18<sup>th</sup> June, will feature a talk about the use of *bio-detection and medical alert assistance dogs*. We will also be welcoming an Ambassador dog!

*We are always delighted to welcome new members and visitors to our meetings. You are very welcome to come along too- we look forward to seeing you!*

Please contact Sarah on my new email address  
at :[commskmwi@gmail.com](mailto:commskmwi@gmail.com)

Please also note the details on adjacent poster for –

**Saturday, 27<sup>th</sup> June**

**10:00am to 13:00pm and 14:00pm to 17:00pm**

*Community, Free First Aid Training, in Village Hall*

*In Partnership with Keinton WI  
and Keinton Mandeville Parish Council*

Places are limited. Book Now  
Email [commskmwi@gmail.com](mailto:commskmwi@gmail.com)  
and reserve your free place

Over 8 years only please

**Please Note: refreshments (tea/coffee/cakes) will be available on Saturday, 27th June  
Cash donations welcomed.**



## WOOD WORKS TIMBER FRAMING & CARPENTRY

Structural Timber Work in  
Green Oak and Softwood

For Timber extensions,  
Porches and Outbuildings

Call Tristan Eckl

Tel: 01963 240 426 Mobile: 07939 247 154  
[tristan@woodworksframing.co.uk](mailto:tristan@woodworksframing.co.uk)



## Wheathill Golf Club



INDOOR SIMULATOR CURRENTLY UNDER CONSTRUCTION FOR  
AUTUMN/WINTER 2026. Opening date tbc.



Friendly Clubhouse open to the public 7 days a week

Drinks, coffee & cake, breakfast & lunch.



Now serving Styles Ice Cream too!!

- Par 3 Academy Course £8 Adults £6 Kids, perfect for beginners & families
- Grass Driving Range £4 per bucket
- Professional Shop & Lessons available

01963 240667 [www.wheathillgolf.co.uk](http://www.wheathillgolf.co.uk)



The number one choice  
for all of your printing  
requirements from  
business cards right up  
to A0 size posters.

We have moved, our new address:

8 Buckland Road, Pen Mill Trading Estate  
Yeovil, Somerset BA21 5EA

01935 421924  
[sales@snellprint.co.uk](mailto:sales@snellprint.co.uk)

## Our Parish Magazine is Produced by the Wheathill Benefice Parochial Church Council and printed by Snell Print

The Parish Magazine continues in printed form but is also be available on the Benefice Website: [wheathill.org](http://wheathill.org) plus linked via [kingweston.net](http://kingweston.net) and [lydfordonfosse.co.uk](http://lydfordonfosse.co.uk) and [bartonstdavidparish.gov.uk](http://bartonstdavidparish.gov.uk) Copies are also emailed to contacts on Facebook.

We continue to deliver a free copy to every house in the villages of Barton St David, Keinton Mandeville, Kingweston, Lydford on Fosse and Wheathill by our much valued volunteers.

*"Whilst the Benefice includes advertisements within the magazine this does not mean their endorsement or otherwise of any of the contractors/advertisers, however please do let any business you may use from the adverts, know that you found them in the Wheathill Benefice Parish Magazine".*